



TPU-LINE Data Sheet

All TPU-LINE products are made of polyurethane Covestro Desmopan 3055DU. It has good physical properties and is suitable for demanding applications in almost all municipal and industrial areas. The material has been tested for fire safety.

Standard measurements *	
 Guiding lines (mm):	 Warning studs (mm):
35 x 500 x 3 (P1 only)	35 x 5
35 x 140 x 3,3	35 x 3.3
35 x 295 x 3,3	30 x 5
35 x 295 x 5	30 x 3.3
32 x 295 x 4	25 x 5
27 x 295 x 4	25 x 3.3
16 x 280 x 3	50 x 1.5
* other measurements are available, MOQ applies	

Please note the respective product information, such as installation instructions and care instructions. We assume no liability for the correctness, topicality and completeness of the data.

TPU / P1

Tactile floor guiding strip made of polyurethane.

Smooth surface with longitudinal ribbing.

The edge is inclined at a 45-degree angle, the strip is rectangular on both ends.

Dimensions in mm, width x length x height = 35 x 500 x 3



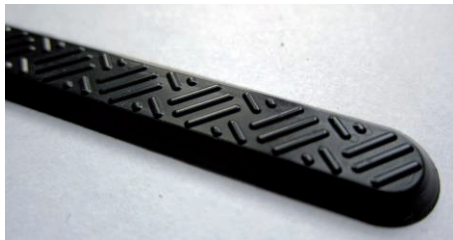
Please note the respective product information, such as installation instructions and care instructions. We assume no liability for the correctness, topicality and completeness of the data.

TPU / P2

Tactile floor guiding strip made of polyurethane.

Surface with short straight ribs in right-angled arrangement.

The edge is inclined at a 45-degree angle, the strip is rounded on both ends.



Please note the respective product information, such as installation instructions and care instructions. We assume no liability for the correctness, topicality and completeness of the data.

TPU / P3

Tactile floor guiding strip made of polyurethane.

Surface with wavy ribs with repetition along the strip.

The edge is inclined at a 45-degree angle, the strip is rounded on both ends.



Please note the respective product information, such as installation instructions and care instructions. We assume no liability for the correctness, topicality and completeness of the data.

TPU / PH

Tactile floor guiding strip made of polyurethane.

Flat sandblasted surface.

The edge is inclined at a 45-degree angle, the strip is rounded on both ends.



TPU / K1

Tactile floor stud made of polyurethane, round.
Smooth surface with ribbing.
The edge is inclined at a 45-degree angle.



TPU / K2

Tactile floor stud made of polyurethane, round.
Surface with short straight ribs in right-angled arrangement.
The edge is inclined at a 45-degree angle.



TPU / K3

Tactile floor stud made of polyurethane, round.
Surface with wavy ribs.
The edge is inclined at a 45-degree angle.



TPU / KH

Tactile floor stud made of polyurethane, round.
Flat sandblasted surface.
The edge is inclined at a 45-degree angle.



Please note the respective product information, such as installation instructions and care instructions. We assume no liability for the correctness, topicality and completeness of the data.

Special polyurethane products available, minimum order quantity may apply:



All TPU-LINE products available with pins for drilling installation.



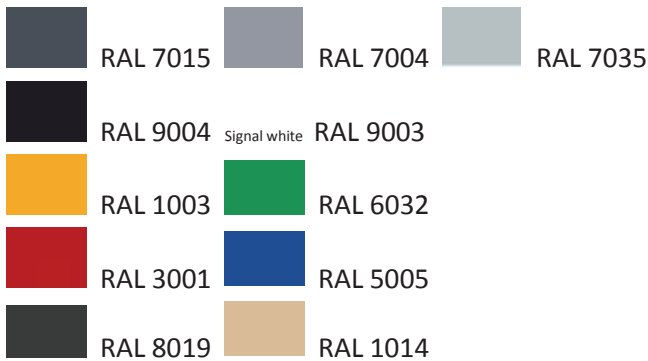
Please note the respective product information, such as installation instructions and care instructions. We assume no liability for the correctness, topicality and completeness of the data.

All TPU-LINE strips and studs available as self-adhesive:

Gerband 941 **3M 93020LE** **3M VHB 4936** **3M VHB 5925** **Bimeks ACR064**



Standard available colours:



Please note the respective product information, such as installation instructions and care instructions. We assume no liability for the correctness, topicality and completeness of the data.