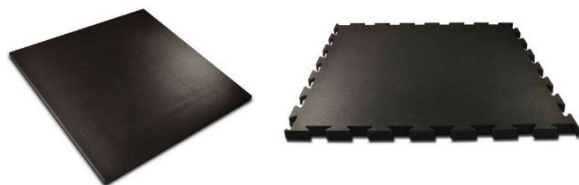


## TECHNICAL SPECIFICATION No 7/2016

### Issue I / 15.12.2021

#### tirolsport Giant Fitness/Fitness Max



**PURPOSE:** The surface of indoor sports facilities such as: gyms, sports halls, shooting ranges and outside - as a type of surface ensuring comfortable exercise with the use of weights and specialized equipment - without attaching to sub-surfaces such as a concrete surface. The mats are non-slip, dampen noise and vibrations, and absorb shocks. They are very easy to clean, which is important in places where many people exercise. They ensure good adhesion of shoes to the ground, are easy to clean and resistant to abrasion and intensive use.

**MATERIAL:** SBR / EPDM RUBBER GRANULES, PU resins

**COLOR:** Black with an admixture of coloured EPDM granules - different colour variants on the customer's request.

Parameters	Value	Unit	Method/Norm
Tensile strength	≥1,8	MPa	PN-EN 12230
Hardness	60±5	°ShA	ISO 7619-1
Density	1,05 – 1,15	g/cm <sup>3</sup>	PN-ISO 2781
Slip resistance	≥90	SRT	EN 13036-4
Abrasion	≤250	mm <sup>3</sup>	PN-ISO 4649
Flammability	C <sub>fl</sub> -s1 SBR_NF C <sub>fl</sub> -s1 EPDM D <sub>fl</sub> -s1 SBR	klasa	PN-EN 13501-1
Increase of sound insulation (R <sub>w</sub> growth)	#10mm : 5 #20mm : 8 #30 mm : 18	dB	ASTM 2611
Acoustic insulation impedance tube	#10mm : 33 (-1; -4) ±1,4 #20mm : 42 (-2; -4) ±0,3 #30mm : 42 (-1; -2) ±1,8	dB	ASTM 2611
Critical fall height HIC	#15 mm : 0,3 #30 mm : 0,8 #40 mm : 0,9	m	PN-EN 1177+AC:2019-04
Squareness control	<1,0	mm	EN 24342
Straightness	<1,0	mm	EN 24342
Colour consistency	ΔE<1,0	Spectrophotometer light D65	Control vs master sample

Product	Dimensions				Unit		Norm
	Length	Width	Height	Weight			
Giant Fitness	1035 ± 5	1035 ± 5	10 ± 1,5	12	mm	kg	PN-EN ISO 1923
			15 ± 1,5	18			
			20 ± 1,5	24			
			25 ± 1,5	28			
Giant Fitness Max (wave backing)			30 ± 1,5	27			
			40 ± 1,5	41			
			50 ± 1,5	52			

- coloured versions are heavier than standard black - depending on EPDM colour proportion
- mats can be produced as puzzle mat and can be cut in various sizes
- from 30 mm (for size 1035 x 1035, no puzzle mat) connectors are included
- puzzle mat external dimension: 1035 x 1035 mm
- puzzle mat coverage: 965 x 965 mm

#### PACKING:

Mats placed on pallets with dimensions of 104 cm x 104 cm, protected with white UV stretch foil, bound with polypropylene tape.

#### IDENTIFICATION:

Pallet with products - product name, product height, quantity, pallet identification number, packing date.

#### STORAGE:

Fitness mats should be stored on pallets in a protective film and protected against external weather conditions. Long-term storage of the panels is possible only in closed, ventilated rooms, not damp after removing the protective foil. Storage temperature: max. 40°C

#### LAYING METHOD:

Fitness mats can be placed on a variety of hard surfaces. The substrate must be even, smooth, dry and without moving parts (not crumbling).

#### RECOMMENDATIONS FOR MAINTENANCE:

Clean with a detergent for indoor use, designed to keep plastic floors clean.

#### HEALTH AND SAFETY AND FIRE CONDITIONS:

The conditions of storage and use of fitness mats must meet all requirements for the storage and use of rubber materials.