

# GRAN CANARIA

2016 COLLECTION  
TECHNICAL SPECIFICATIONS

MADE IN EU

CONTENT |  
45% PP  
55% PE



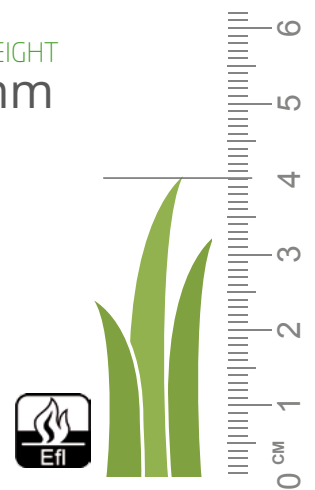
PILE WEIGHT |  
1.950 gr/m<sup>2</sup>  
(±10%)

TOTAL WEIGHT |  
2.950 gr/m<sup>2</sup>  
(±10%)

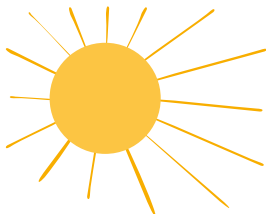
BACKING |  
MARINE  
BACKING

PILE HEIGHT |  
38 mm  
(±10%)

TOTAL HEIGHT |  
40 mm  
(±10%)



## WARRANTY



800 KLY  
(CHECK SEPARATE DOC)

## STANDARDS ROLLS



PILE OUT  
2 / 4 m WIDTH X 20 m LENGTH

## REMARKS

Please notice colour might slightly vary from batch to batch, batches must not be mixed.

We reserve the right to alter technical specifications without prior notice.