

SUPERIOR 33

model	Application	Warranty	Dimensions
SUPERIOR 33	Tie stall cowsheds Free stall cowsheds	5 years 10 years	120 x 200 cm thickness 50 mm

Benefits

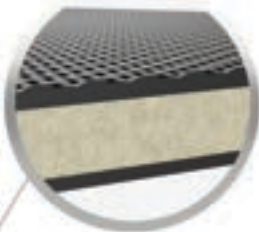
- The innovative combination of foam and robust rubber materials guarantees superior resting comfort with 28 mm of deflection
- Tightly sealed 30 mm foam in a rubber case is a breakthrough in the cubicle mat market
- The thermal insulation properties translate into maintaining the correct body temperature, which increases productivity
- Non-slip structure provides stability to reduce the likelihood of injury
- The design and easy assembly of the mattress allows it to be kept clean
- Customisable cubicle dimensions: 110-130 x 170-200 cm

10-year warranty



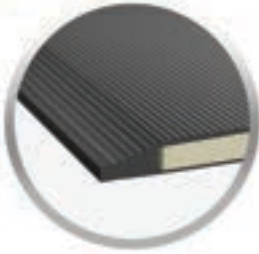
NON-SLIP STRUCTURE
provides improved
stabilisation to reduce
the likelihood of injury.

The foam layer is **definitely
MORE comfortable**, which
directly translates into
GREATER productivity.



Easy to keep clean.

Rubber connection
system developed by
Geyer & Hosaja LABS.



HIGH QUALITY MATERIALS GUARANTEE COMFORT
and the maintenance of the correct body temperature

